

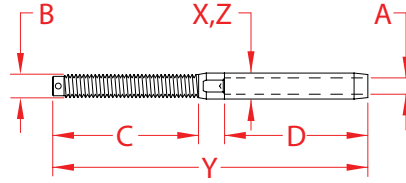
# SWAGE STUD, RIGHT HAND, UNF 316 STAINLESS STEEL



Import



Precision  
Machined



ITEM	A (wire)	B (thread)	C	D	BEFORE (swage)	AFTER (swage)	X (height)	Y (length)	Z (width)	WT (lb)	PACKAGING TYPE	EACH (qty)	INNER (qty)	CARTON (qty)	UPC
S0731-0501	1/16"	3/16"	1.69"	1.04"	0.16"	0.14"	0.16"	3.37"	0.16"	0.01	POLYBAG	1	100	2,000	791506049067
S0731-0502	3/32"	3/16"	1.75"	1.26"	0.22"	0.19"	0.22"	3.65"	0.22"	0.02	POLYBAG	1	100	1,500	791506049074
S0731-0702	3/32"	1/4"	2.25"	1.26"	0.22"	0.19"	0.22"	4.13"	0.22"	0.04	POLYBAG	1	100	1,000	791506049081
S0731-0703	1/8"	1/4"	2.20"	1.51"	0.25"	0.22"	0.25"	4.31"	0.25"	0.04	POLYBAG	1	50	1,000	791506049098
S0731-0704	5/32"	1/4"	2.15"	1.76"	0.30"	0.25"	0.30"	4.67"	0.30"	0.05	POLYBAG	1	50	600	791506049104
S0731-0705	3/16"	1/4"	2.19"	2.01"	0.36"	0.31"	0.36"	4.96"	0.36"	0.07	POLYBAG	1	50	500	791506049111
S0731-0903	1/8"	5/16"	2.05"	1.51"	0.25"	0.22"	0.30"	4.40"	0.30"	0.06	POLYBAG	1	50	500	791506049128
S0731-0904	5/32"	5/16"	2.12"	1.76"	0.30"	0.25"	0.30"	4.85"	0.30"	0.08	POLYBAG	1	50	500	791506049135
S0731-0905	3/16"	5/16"	2.50"	2.01"	0.36"	0.31"	0.36"	5.00"	0.36"	0.09	POLYBAG	1	10	400	791506049142
S0731-1005	3/16"	3/8"	2.68"	2.01"	0.36"	0.31"	0.36"	5.15"	0.36"	0.11	POLYBAG	1	10	250	791506049159
S0731-1006	7/32"	3/8"	2.72"	2.26"	0.43"	0.38"	0.43"	5.51"	0.43"	0.15	POLYBAG	1	10	200	791506049166
S0731-1007	1/4"	3/8"	2.75"	2.51"	0.49"	0.44"	0.49"	5.90"	0.49"	0.19	POLYBAG	1	10	200	791506049173
S0731-1307	1/4"	1/2"	3.00"	2.51"	0.49"	0.44"	0.49"	6.45"	0.49"	0.28	POLYBAG	1	10	150	791506049180
S0731-1308	9/32"	1/2"	3.10"	2.76"	0.56"	0.50"	0.56"	6.76"	0.56"	0.34	POLYBAG	1	10	120	791506049197
S0731-1309	5/16"	1/2"	3.12"	3.01"	0.64"	0.56"	0.64"	7.35"	0.64"	0.43	POLYBAG	1	10	100	791506049203
S0731-1609	5/16"	5/8"	3.72"	3.01"	0.64"	0.56"	0.62"	8.31"	0.62"	0.59	POLYBAG	1	5	50	791506049210
S0731-1610	3/8"	5/8"	4.00"	3.51"	0.70"	0.63"	0.70"	8.71"	0.70"	0.68	POLYBAG	1	5	50	791506049227
S0731-2013	1/2"	3/4"	4.75"	4.67"	0.84"	0.75"	0.84"	10.47"	0.84"	1.12	POLYBAG	1	5	40	791506049234

**NOTE:**  
ALL DIMENSIONS ARE NOMINAL (+/- 3%) AND ARE SUBJECT TO CHANGE WITHOUT NOTICE.